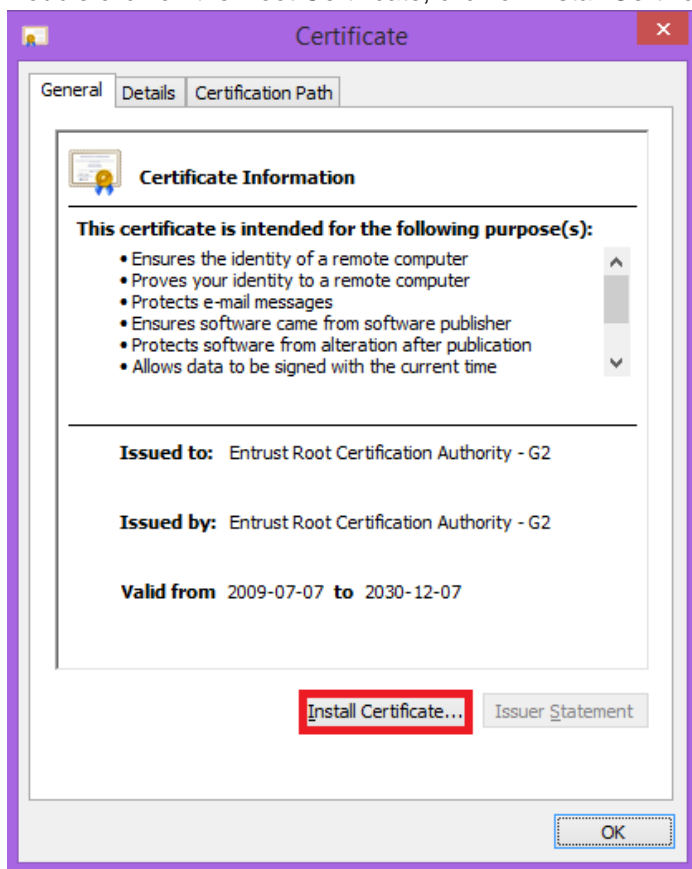


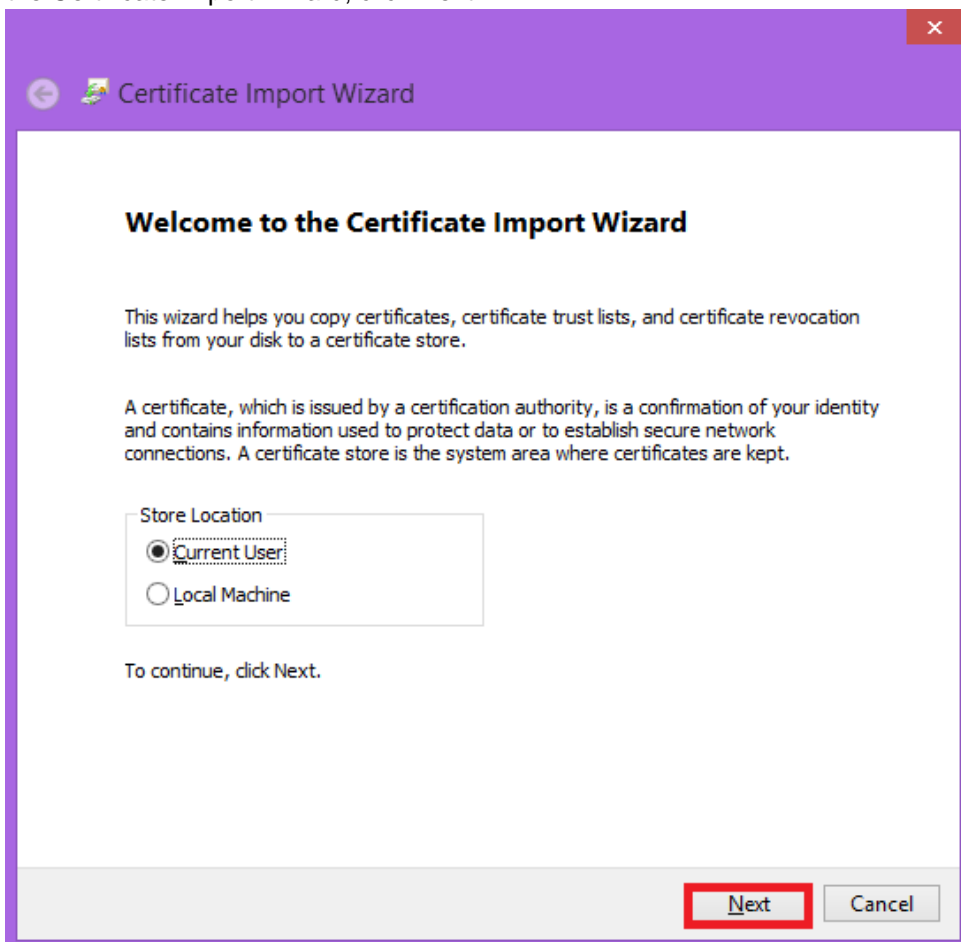
ROOT CERTIFICATE AND INTERMEDIATE CERTIFICATE INSTALLATION MANUAL

1. Root Certificate

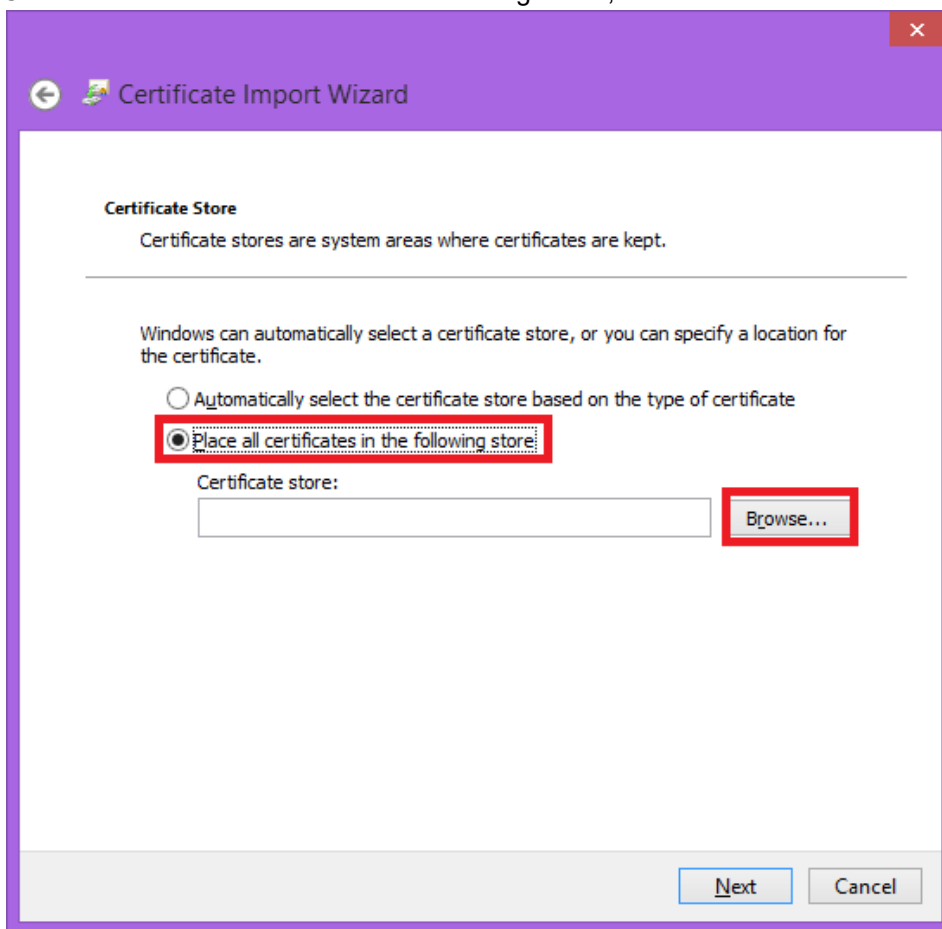
1.1 Double click on the Root Certificate, click on Install Certificate.



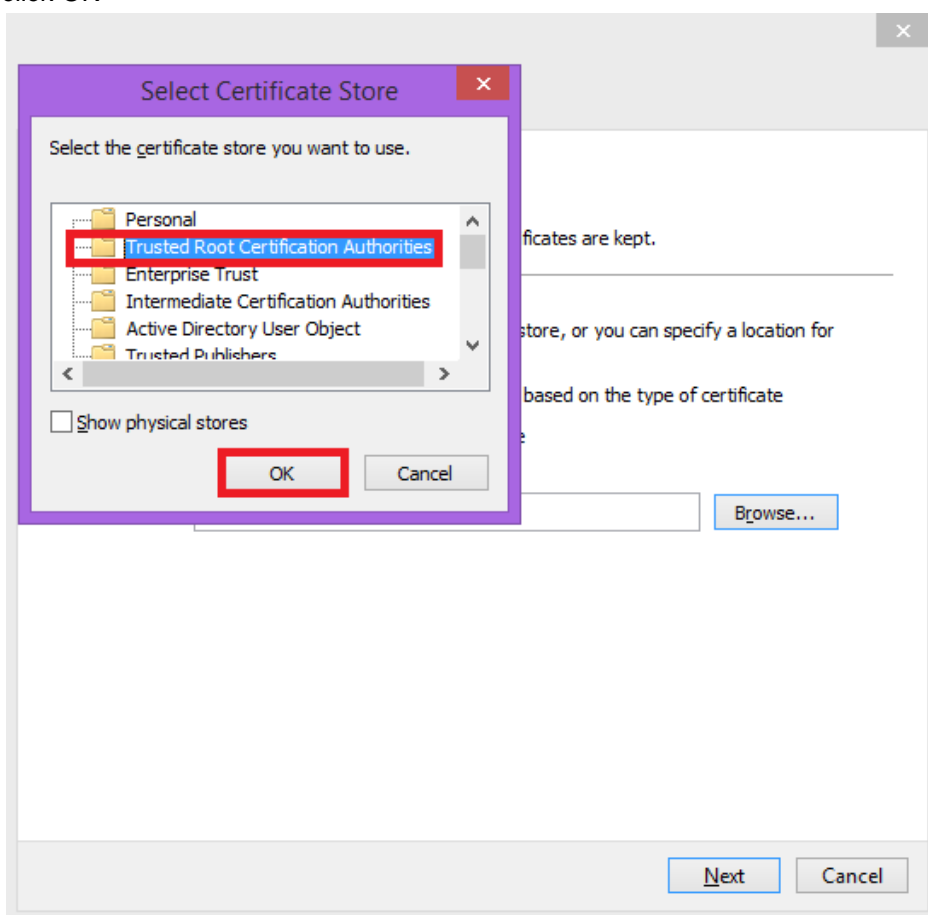
1.2 Once you have clicked on Install certificate, then the Certificate Import Wizard will open. On the Certificate Import Wizard, click Next.



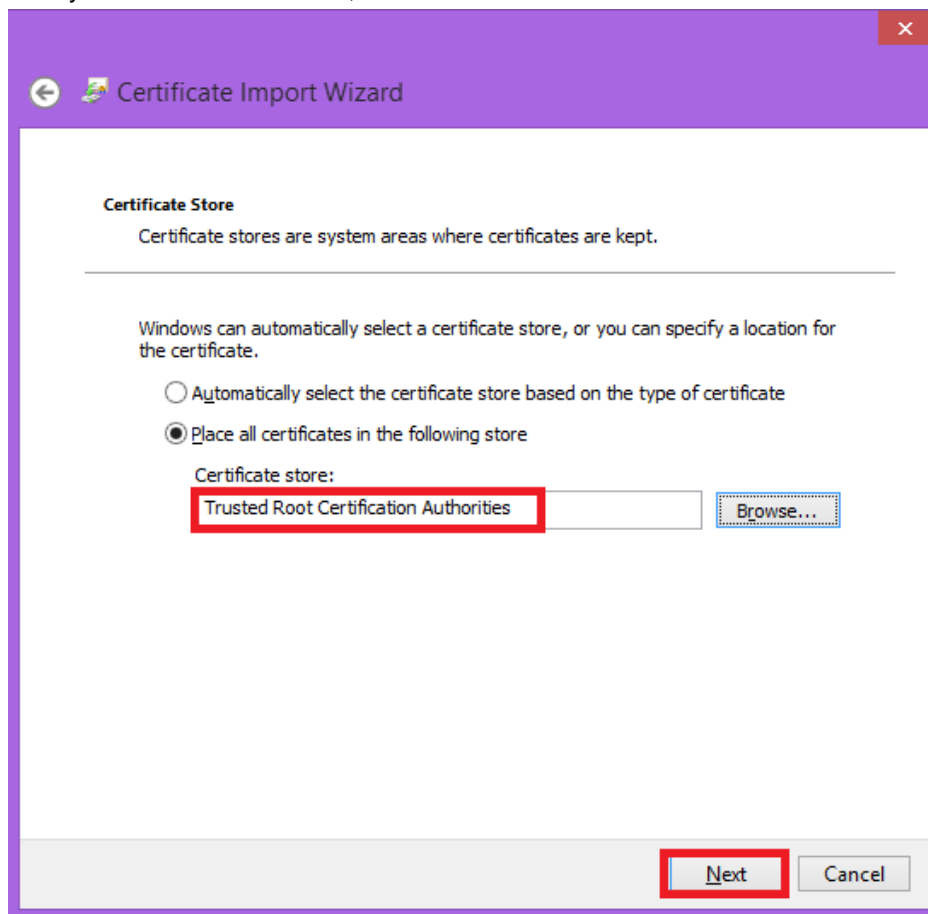
1.3 Click on “Place all certificates in the following store”, then click on Browse.



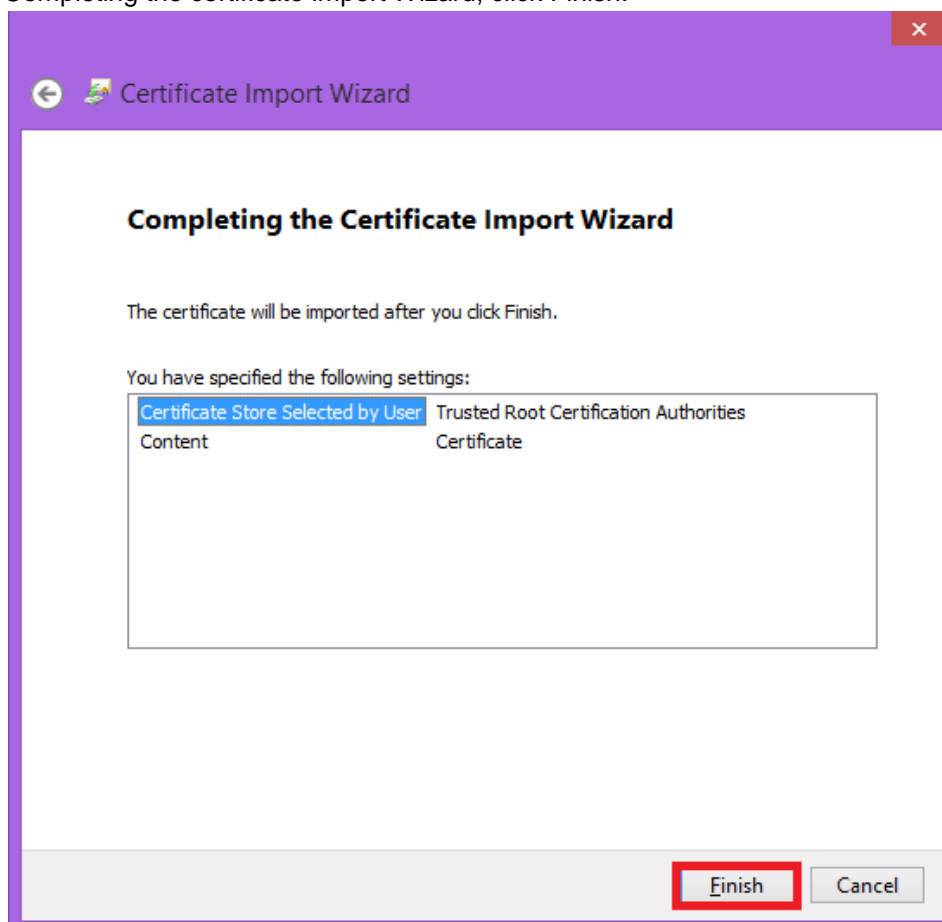
1.4 The certificate store window will pop up, click on Trusted Root Certification Authorities, then click OK



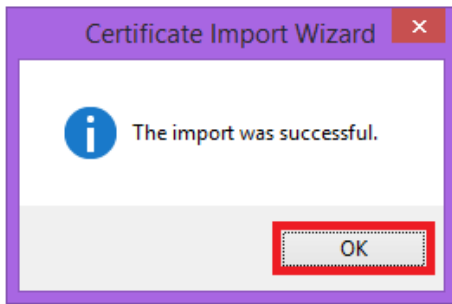
1.5 Once you have clicked on OK, the certificate store will reflect as below. Click Next.



1.6 Completing the certificate import Wizard, click Finish.

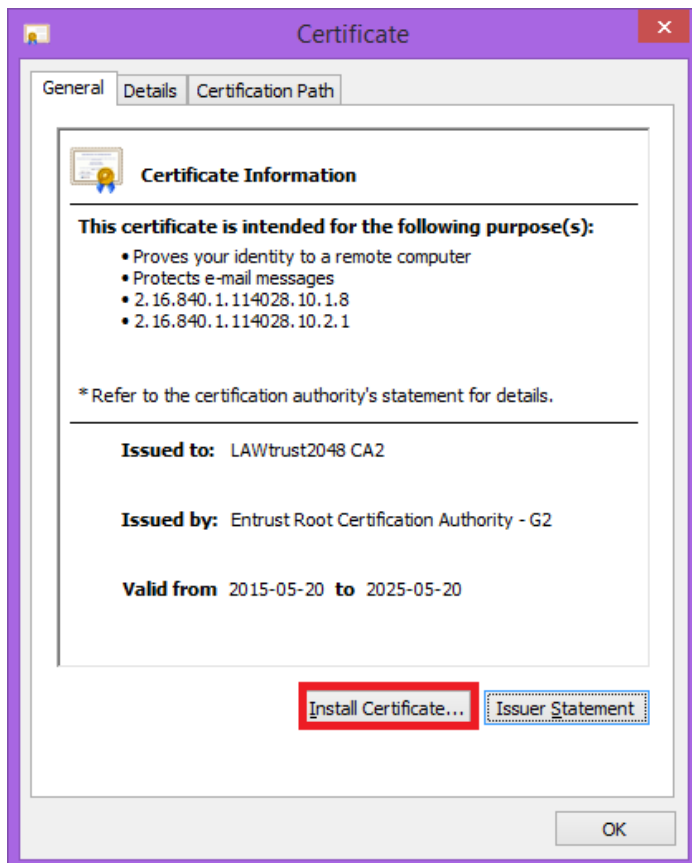


1.7 The import was successful, click OK.

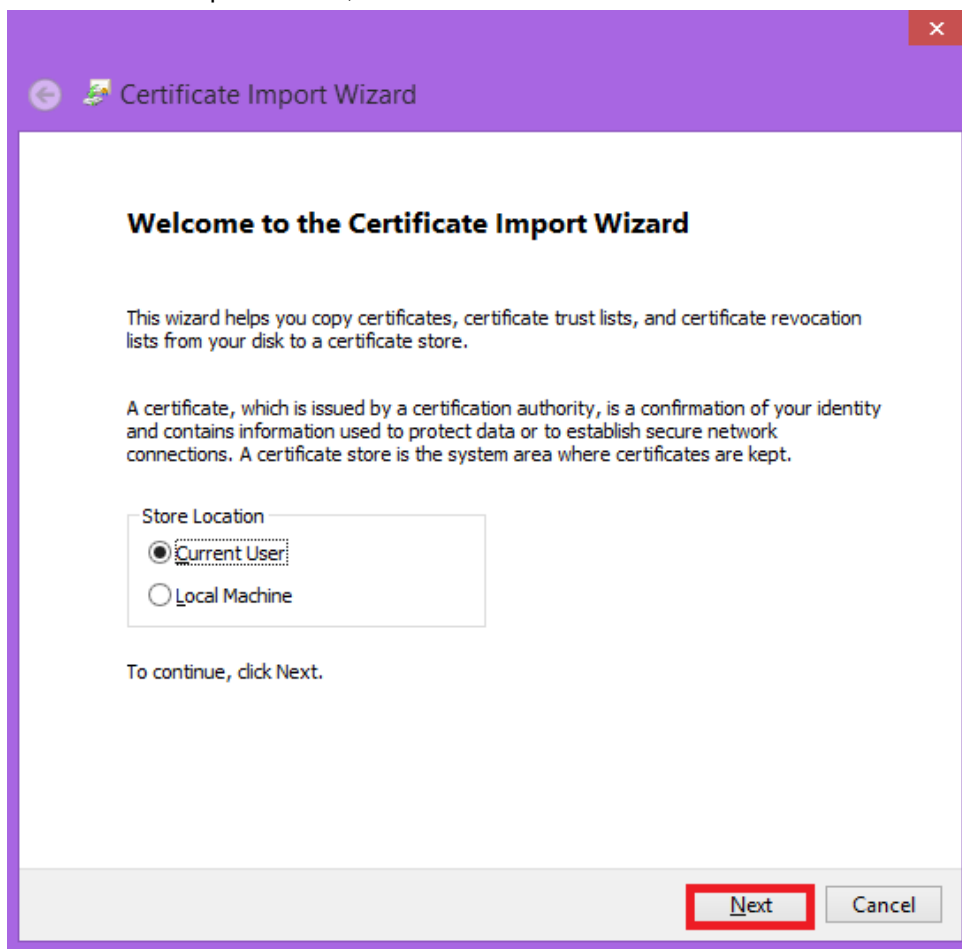


2. Intermediate certificate

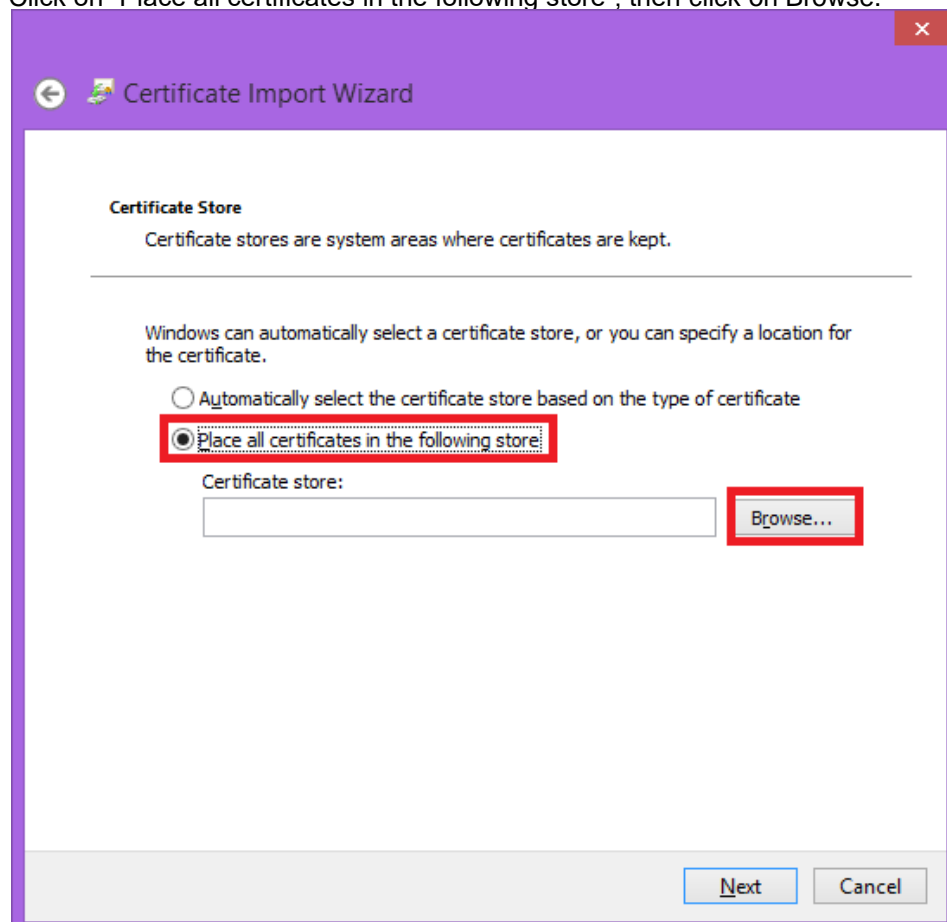
2.1 Double click on the Intermediate Certificate. Click on Install Certificate.



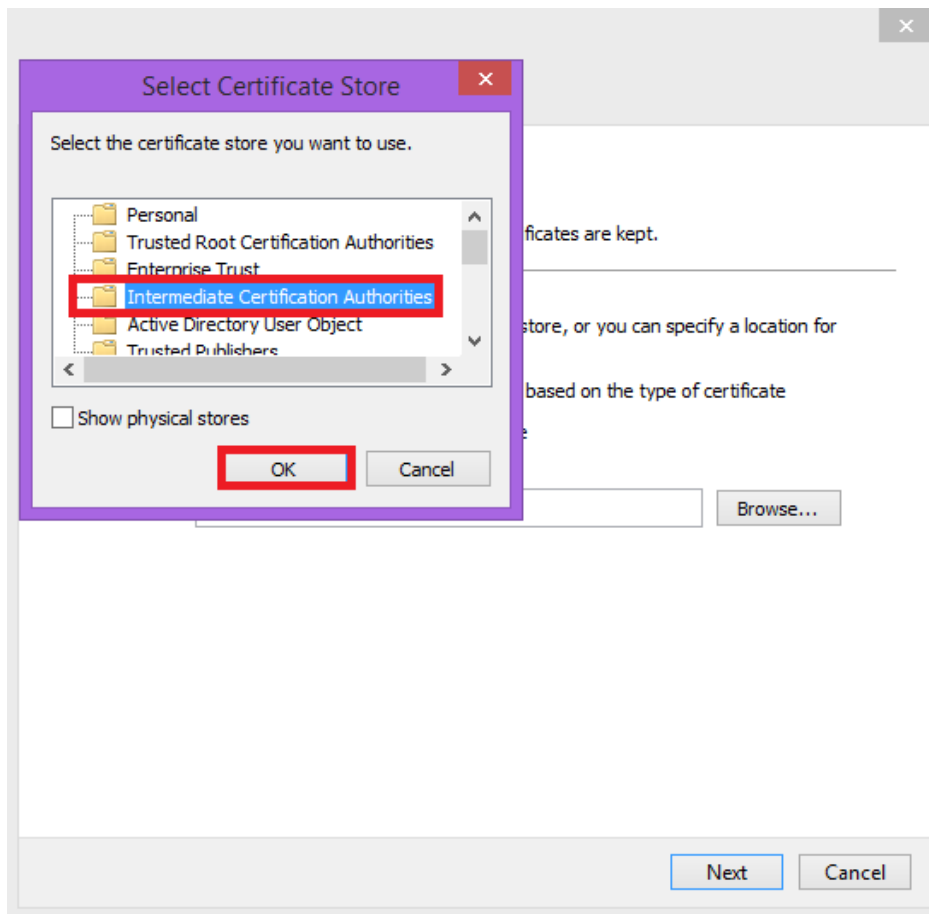
- 2.2 Once you have clicked on Install certificate, then the Certificate Import Wizard will open. On the Certificate Import Wizard, click Next.



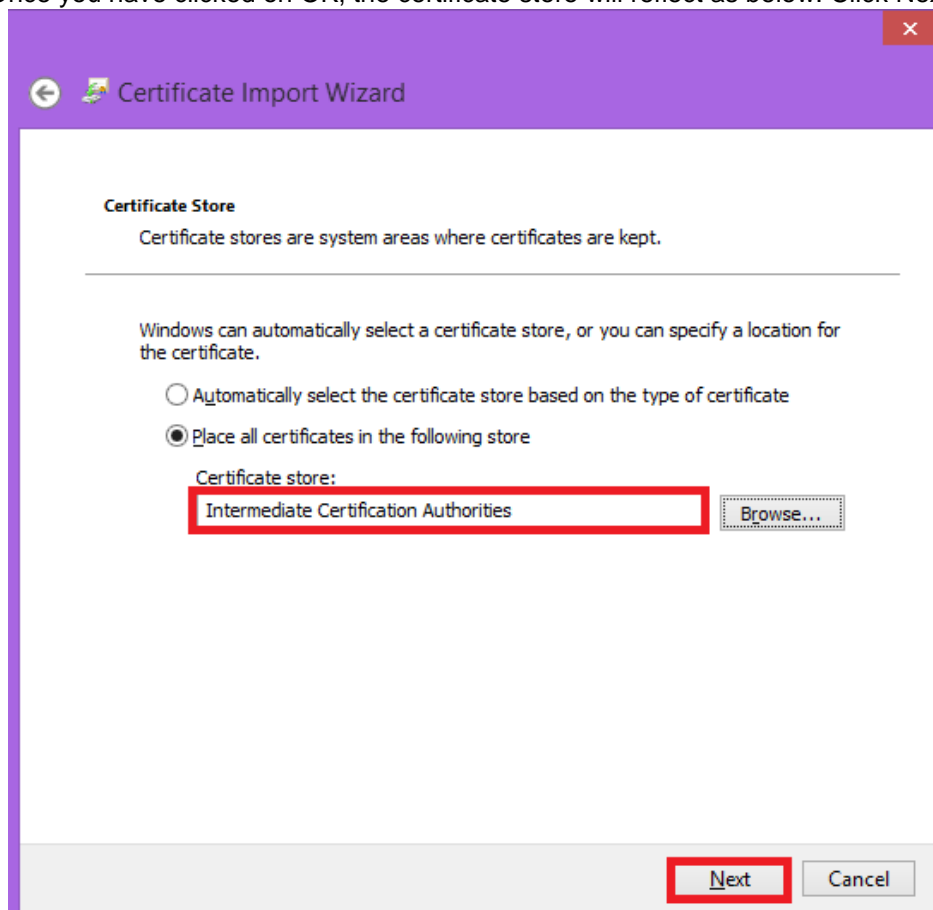
- 2.3 Click on "Place all certificates in the following store", then click on Browse.



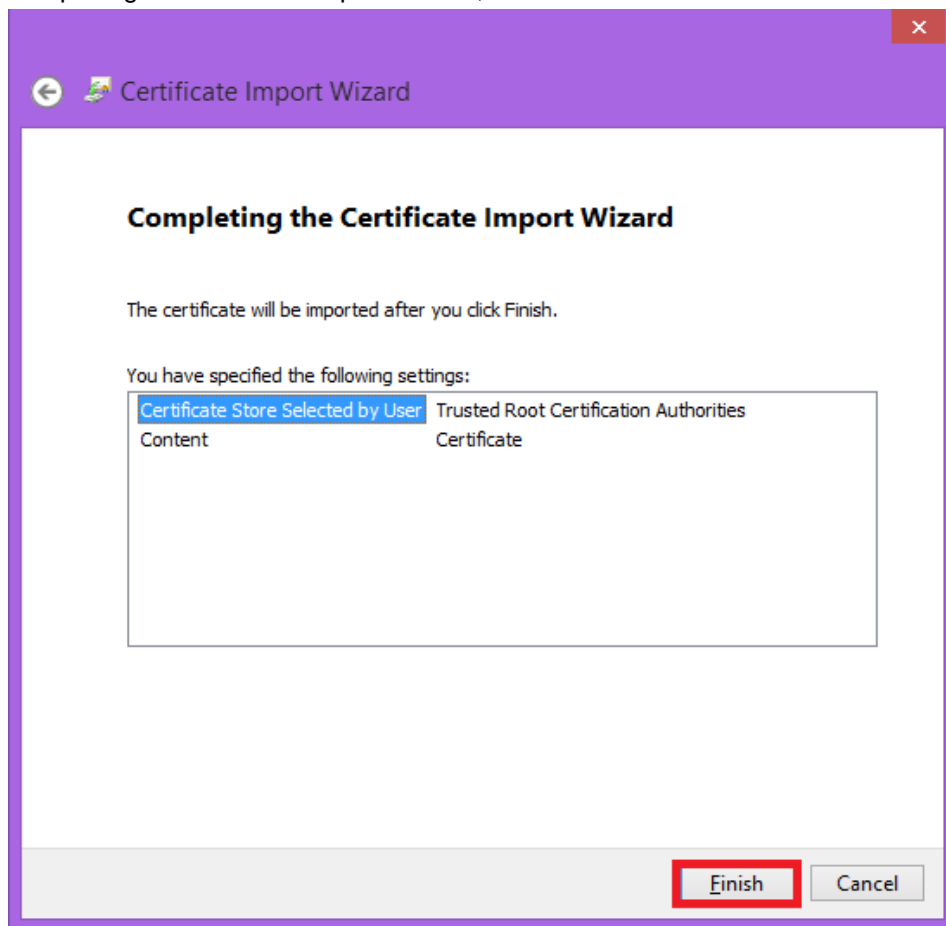
- 2.4 The certificate store window will pop up, click on Intermediate Certification Authorities, then click OK



- 2.5 Once you have clicked on OK, the certificate store will reflect as below. Click Next.



2.6 Completing the certificate import Wizard, click Finish.



2.7 The import was successful, click OK.

